

A New Tool to Support Water Projects in the Region:

Experience of the Milwaukee Metropolitan Sewerage District



Karen Sands, AICP
Director of Planning, Research, & Sustainability

Milwaukee Metropolitan Sewerage District

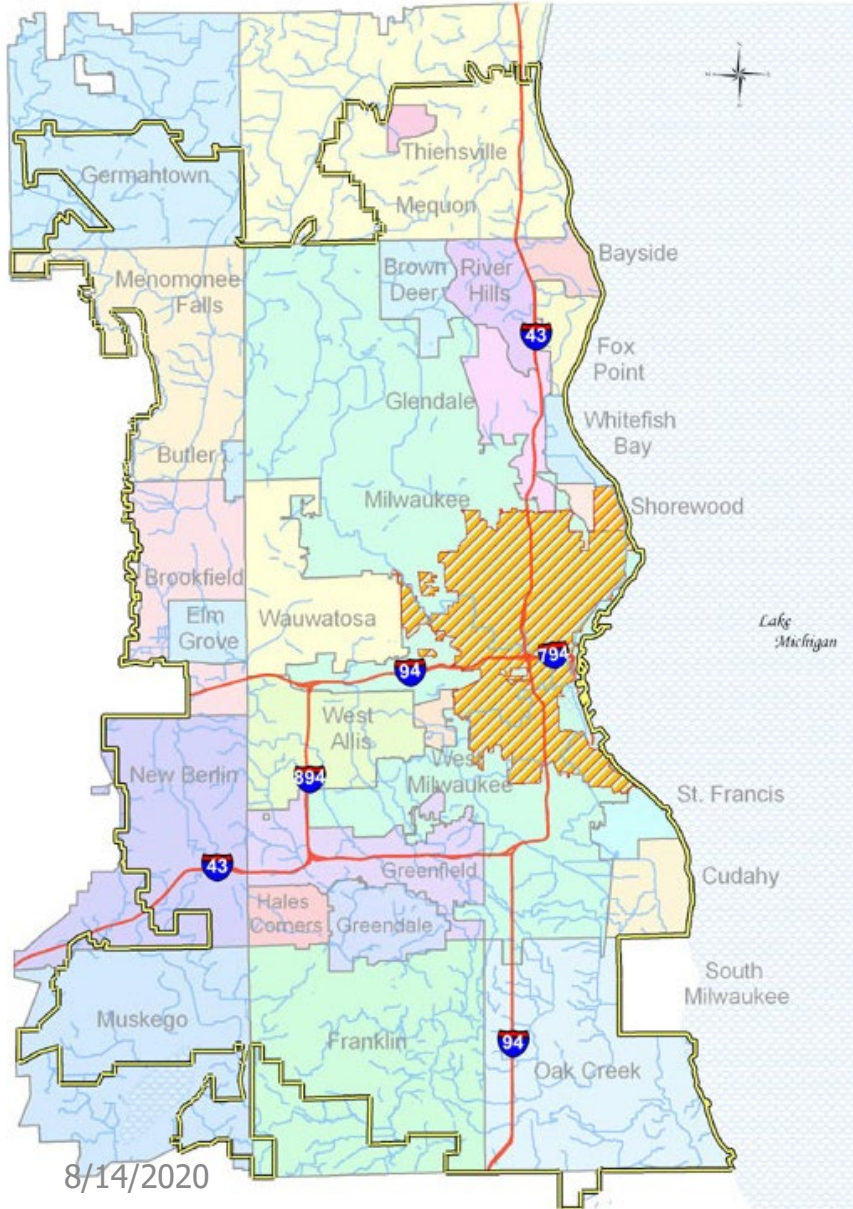
August 14, 2020

Karen's Talk...

- MMSD
- Development of the project/plan for proceeds
- Experience w/the Platform
- Holistic experience and benefits



Milwaukee Metropolitan Sewerage District



We Serve:

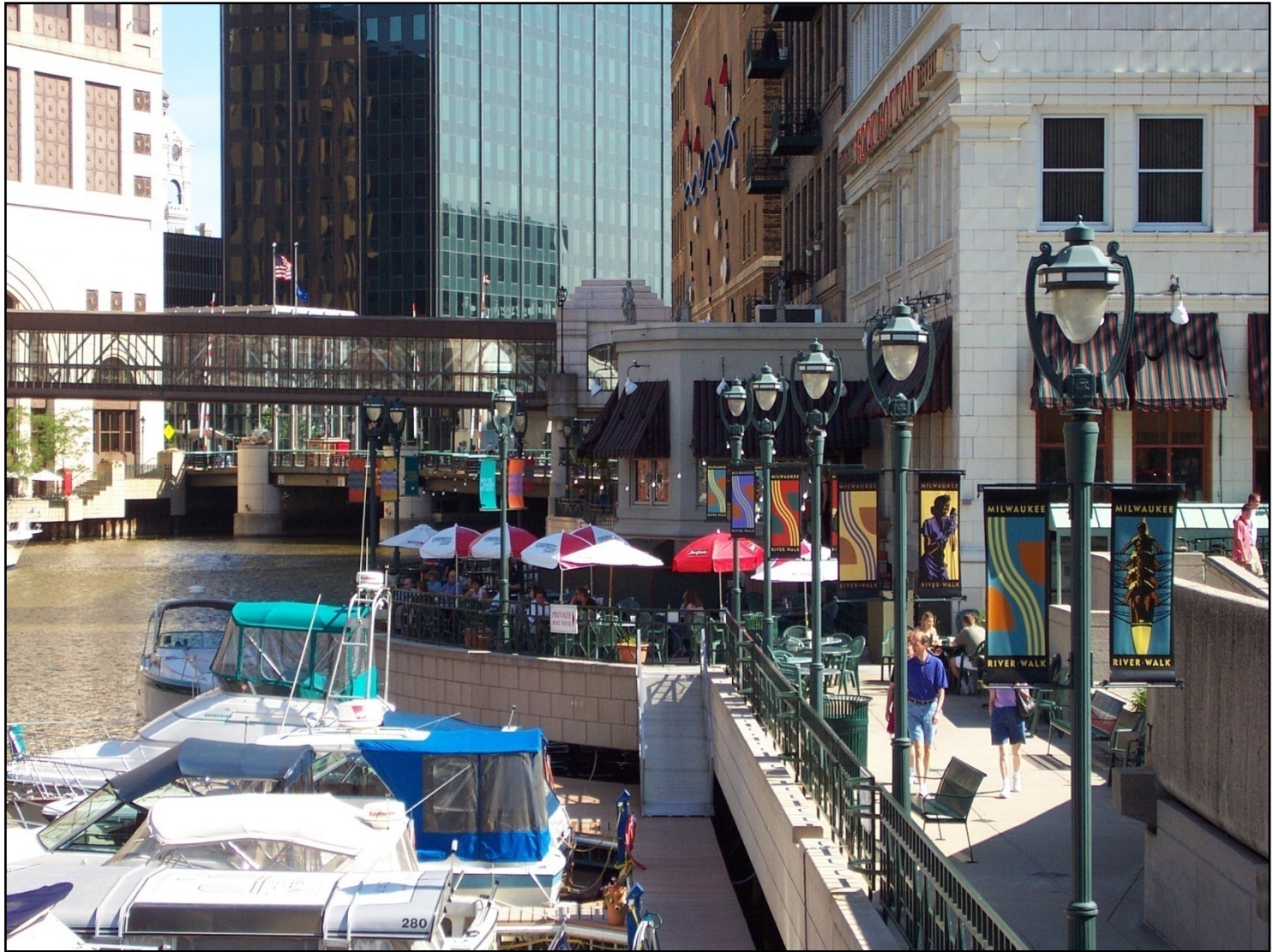
- 1.1 Million Customers
- 28 Municipalities
- 411 Square Miles

Using Grey Infrastructure:

- Collector Sewers
- 2 Water Reclamation Facilities
- 521 MG Tunnel Storage

To Protect the Environment:

- Convey/Store/Reclaim Wastewater
- Manage Flooding
- Much More...



Environmental Project Financing at MMSD

Operations & Maintenance Budget

Operating Funding

User Charges
Industrial Waste Pretreatment Program
Household Hazardous Waste Program
Milorganite® Sales (Net)*
Interest Income
Other Income

Operating Expenses

Net Division Expenses**
Net Fringe Benefit Expenses**

Capital Budget

Capital Funding

Tax Levy
Non-Member Billings
State Loans
Federal and State Aid
Interest Income
District Issued General Obligation Bonds

Capital Expenditures

Water Reclamation Facilities
Conveyance System
Watercourse & Flood Management Projects
Facilities Planning and Other Projects
Net Debt Service

Why *Environmental* Bonds?

MMSD is an environmental agency, with...

- MMSD Commission Environmental Policies
- Environmental Road Maps/Plans Driving Projects
- Measurable Environmental Goals
 - 2035 Vision
 - GLIIP Platform Goals
 - United Nations' Sustainable Development Guidelines



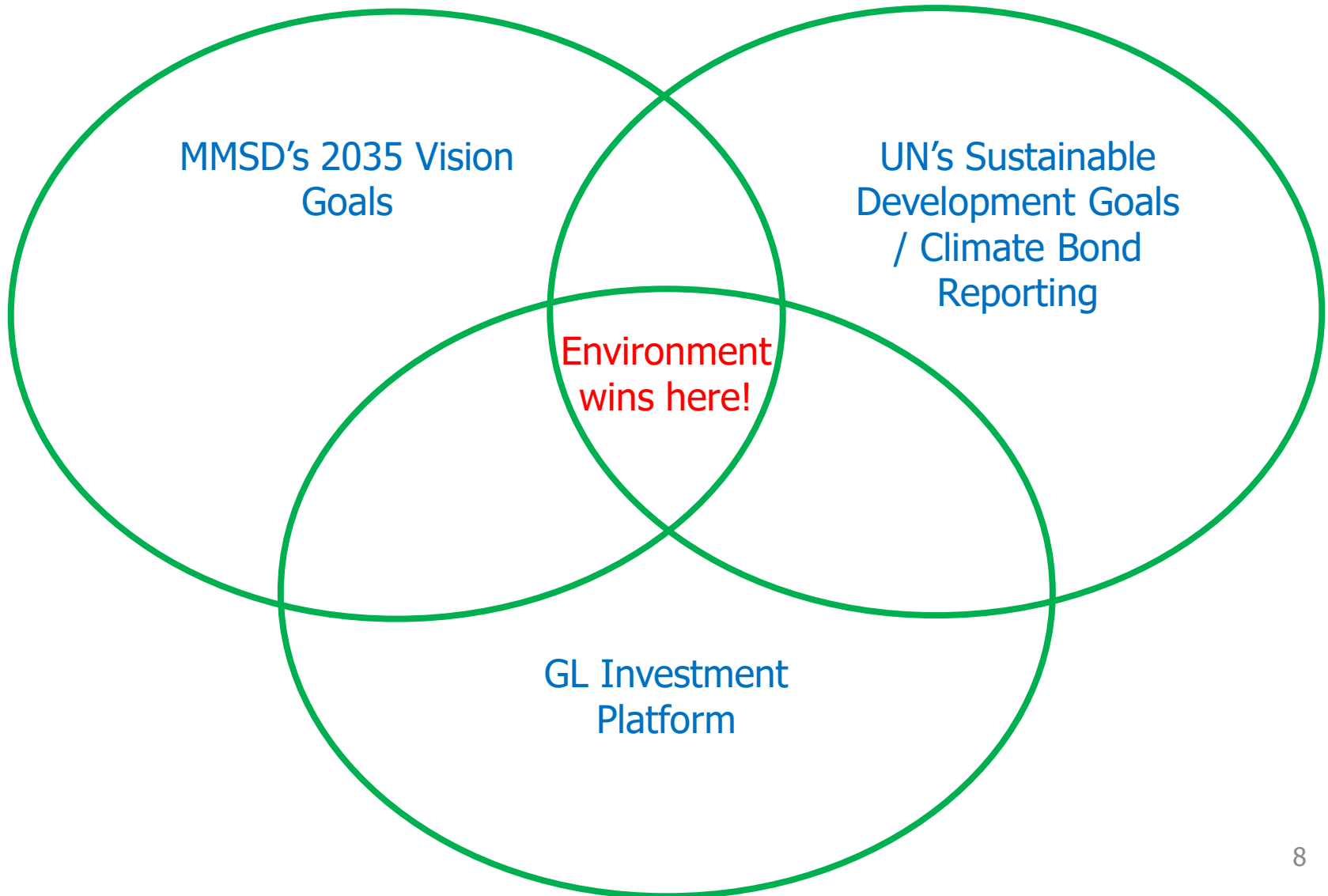
MMSD's Environmental 2035 Vision

Strategic Objectives For:

1. Integrated Watershed Management
2. Climate Change Mitigation/Adaptation with an Emphasis on Energy Efficiency



Three Sets of Environmental Goals, Working Together



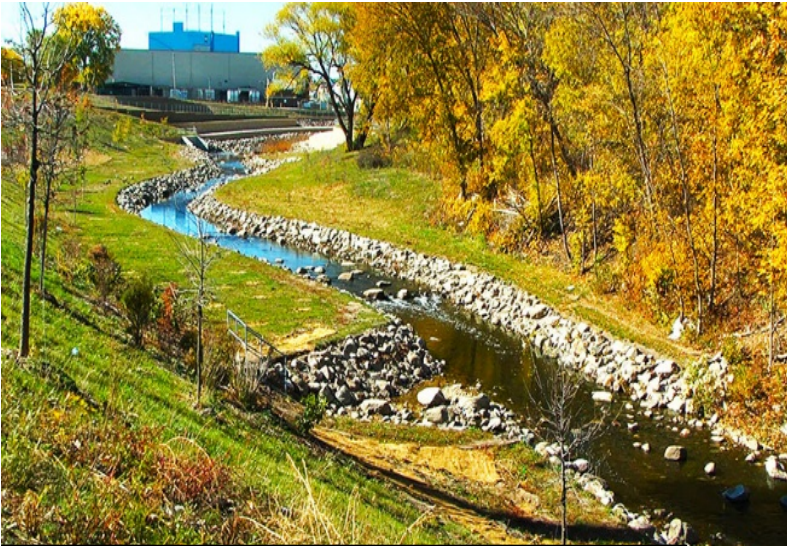
MMSD's Green & Climate Bond Projects Include

- Green infrastructure
- Watercourse (flood management, instream & riparian habitat)
- Other components:
 - Conveyance/storage
 - Reclamation/biosolids



Highlight Project 1:

Central Steel/Wilson Park Creek R3



Kinnickinnic River: Prior District work accomplished.



Wilson Park Creek now

Highlight Project 2:

Jackson Park/WE Energies Site



Present-day Jackson Park

Highlight Project 3:

Community Based Green Infrastructure



GI at MMSD



New GI Installation at an MPS School



NATURAL SOLUTIONS TO WATER POLLUTION

FRESH COAST ⁷⁴⁰
MILWAUKEE, WISCONSIN

Funded in 2020

8 Million Gallons

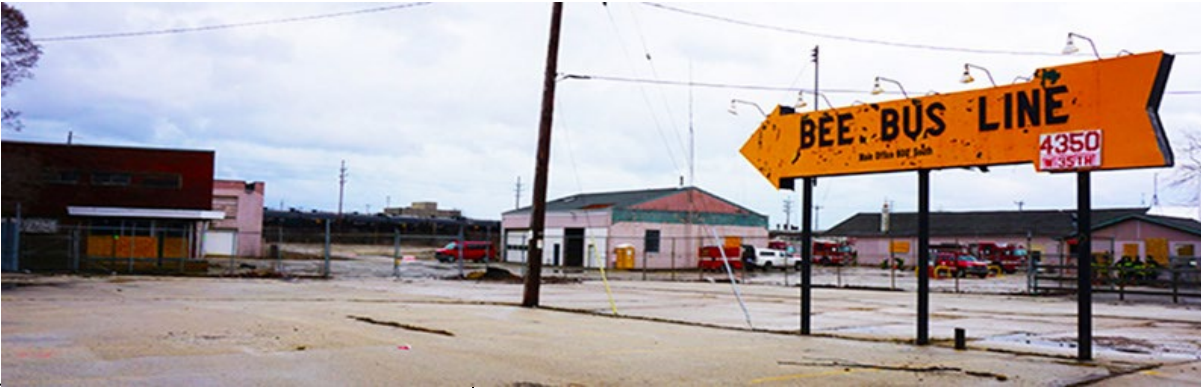
Built Since 2002

32 Million Gallons



Highlight Project 4:

Bee Busline Property/West Basin



Current Bee Busline Site



30th St Corridor Flood Basin

MMSD Experience w/the Platform

- Initial discussions:
 - Identification of environmental goals, projects
 - Plans for environmental performance reporting
- Decision to also seek Climate Bond certification
- Bonds to meet:
 - GL Platform requirements
 - Climate Bond requirements



Next Step: Bridge Table!

- Develop table bridging:
 - UN's SDGs
 - MMSD's 2035 Vision
 - Platform's Goals

Holistic Experience & Benefits

- Platform participation
- Climate Bond certification
- Successful marketing
- Plan for implementation including reporting
- Triple bottom line benefits



QUESTIONS?

