



MINNESOTA'S HERITAGE FOREST

Participant: The Conservation Fund

Location: Northern Minnesota

Investment class: Green Bonds

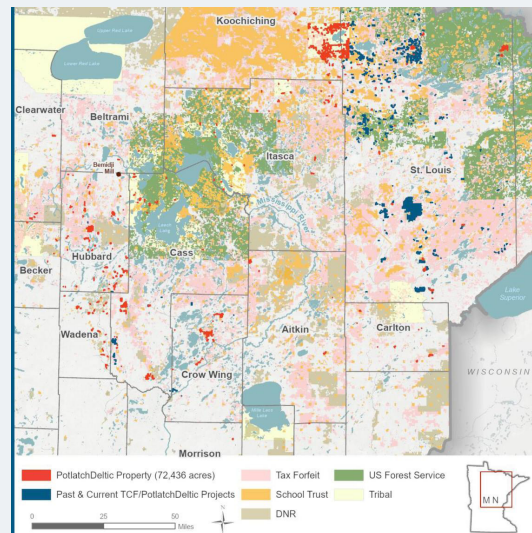
Amount financed: US\$48,000,000

The Project: Located in the headwaters area of the Mississippi River, 31,000 acres of Minnesota's Heritage Forest supports more than 350 species, such as many of the endangered, threatened and rare species listed in Minnesota. These include the northern long-eared bat, red-shouldered hawk and Blanding's turtle. This project is also located within the Mississippi River flyway, a vital migration corridor providing connectivity for nearly half of North America's bird species and about 40 percent of ducks and other waterfowl. Keeping these lands forested will help to protect critical habitats that serve as climate resilient strongholds and play an essential role in supporting wildlife movement and diversity now and into the future. As one of the largest land conservation acquisitions in recent state history, the purchase provides time for the development of permanent conservation strategies that will preserve working forestland, safeguard jobs, and help mitigate climate change. It will also protect water quality and wildlife habitat, contribute to local economies and allow recreational access. The Conservation Fund is working with county, state, tribal and local governments to determine the best conservation and sustainable management outcomes for the forestland, with the goal of transferring ownership to public and tribal entities over the course of the next decade.

ESG Outcomes:

- Nutrient reduction
- Carbon sequestration
- Protection and restoration of streams and wetlands

For more information, contact:
Michael Kelly - kellym@conservationfund.org



Alignment with UN Sustainable Development Goals:

